



WELCOME TO PAIGNTON ACADEMY

TUTOR WELCOME

- Excellence for All
- Character
- Outstanding Relationships
- Ambition
- Love of Learning
- Community
- Pride



BROADSANDS HOUSE

- Excellence for All
- Character
- Outstanding Relationships
- Ambition
- Community
- Love of Learning
- Pride



WE ARE BROADSANDS

 **Attitude**

Resilience 

 **Kindness**

Our motto

Attitude - being a focal point, utilising older pupils as role models.

Resilience - a key underlying theme. Aims to generate a greater sense of self-belief within pupils.

Kindness - creating a culture of care and empathy, within and outside of school.



- Excellence for All
- Character
- Outstanding Relationships
- Ambition
- Love of Learning
- Community
- Pride



ELBERRY HOUSE

- Excellence for All
- Character
- Ambition
- Outstanding Relationships
- Community
- Love of Learning
- Pride



The Elberry Ethos

Respect - among peers and adults in school and society

Resilience - generate a greater sense of self-belief

Reward - working hard to achieve personal goals

- Excellence for All
- Character
- Ambition
- Outstanding Relationships
- Community
- Love of Learning
- Pride



GOODRINGTON HOUSE

- Excellence for All
- Character
- Outstanding Relationships
- Ambition
- Community
- Love of Learning
- Pride



Goodrington House

EST: 2019

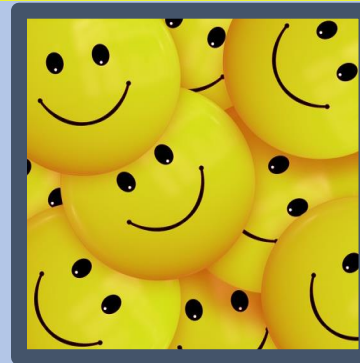


Will you apply our motto throughout the year?

LIVE - Show resilience and do your very best

LAUGH - Enjoy school and keep improving

LEARN - Develop knowledge and embrace challenges



- Excellence for All
- Character
- Outstanding Relationships
- Ambition
- Love of Learning
- Community
- Pride



PRESTON HOUSE

- Excellence for All
- Character
- Ambition
- Outstanding Relationships
- Community
- Love of Learning
- Pride



Preston House Ethos

HONESTY - being honest in all our endeavours, focusing on always trying our best.

COURAGE - Having the courage to 'have a go' and build on our self-belief and ambition.

GENEROSITY – being a part of Paignton Academy community and beyond. Being a kind, caring and empathetic citizen.

• Excellence for All
• Character

• Outstanding Relationships
• Ambition

• Love of Learning
• Community

• Pride



MAKE NEW FRIENDS



- Excellence for All
- Character
- Outstanding Relationships
- Ambition
- Love of Learning
- Community
- Pride



SUCCESSFUL LEARNING



- Excellence for All
- Character
- Outstanding Relationships
- Ambition
- Love of Learning
- Community
- Pride



INDUCTION DAYS 4TH & 5TH JULY

A chance to meet staff
Opportunity to make new friends
Experience different lessons
Become familiar with the site

Thursday 4th July - 8.20am to 2.45pm (Primary Uniform)

Friday 5th July - 8.20am to 2.45pm (Primary PE kit)

- Excellence for All
- Character
- Outstanding Relationships
- Ambition
- Love of Learning
- Community
- Pride



BOROUGH ROAD ENTRANCE



- Excellence for All
- Character
- Ambition
- Outstanding Relationships
- Community
- Love of Learning
- Pride



WATERLEAT ROAD ENTRANCE



INDUCTION DAY - ENTER THROUGH RECEPTION

- Excellence for All
- Character
- Outstanding Relationships
- Ambition
- Love of Learning
- Community
- Pride



VARIETY OF 5 LESSONS A DAY



- Excellence for All
- Character
- Outstanding Relationships
- Ambition
- Love of Learning
- Community
- Pride



SCHOOL DAY

- 8:20am - Arrival
- 8.30am - Registration/Assembly
- 8.50am - Lesson 1
- 9.50am - Lesson 2
- **10.50am** - **Break Time**
- 11.15am - Lesson 3
- 12.15pm - Lesson 4
- **1.15pm** - **Lunch Time**
- 1.55pm - Lesson 5
- 3.00pm - End of school
- 3.00-4pm - Enrichment



LIBRARY – FREE TOAST BEFORE SCHOOL OPEN AT BREAK, LUNCH & AFTER SCHOOL



- Excellence for All
- Character
- Ambition
- Outstanding Relationships
- Community
- Love of Learning
- Pride

FOOD CHOICES

Choices

- 1) Packed lunch
- 2) FSM £2.50 a day
- 3) Snack and purchase food

Parents can load money onto ParentPay to purchase school lunches from September.

Cash for induction days.





MEAL OF THE DAY – BEST VALUE

The menu runs on a 3 week rotation – click here to view the current menu – and meal deals are available:

MEAL DEAL

Any Main Meal
(World Kitchen Menu)
&
Dessert
&
Water/Cup Drink

£2.50

Great Value **Aspens**

MEAL DEAL

Any Classic Sandwich
&
Cookie
&
Water/Cup Drink

£2.50

Great Value **Aspens**

MEAL DEAL

Jacket Potato
+ 2 Toppings
&
Dessert
&
Water/Cup Drink

£2.50

Great Value **Aspens**



INDUCTION DAY MENU

Break Time 10:50am - 11.15am
Lunch 1:15pm - 1:50pm

Menu on Induction Days

Beef or Cheese Burger or Vegetarian Sweet potato burgers
Wedges
Peas or Baked Beans
BBQ Slaw

Chocolate Brownie

Cajun Battered Fillet of Fish with Chunky Chips
Vegetable Sausage / Cheese Burger
Peas or Beans
Sponge with Custard

Meal of the Day £2.10
Meal of the Day and Dessert £2.50
Free Meal Allowance £2.50
Drinks from 70p



- Excellence for All
- Character
- Outstanding Relationships
- Ambition
- Love of Learning
- Community
- Pride



CLASSCHARTS

COVID-19/HOME LEARNING CENTRE

PRIMARY SECONDARY CONTACT US ENGLISH (UK)



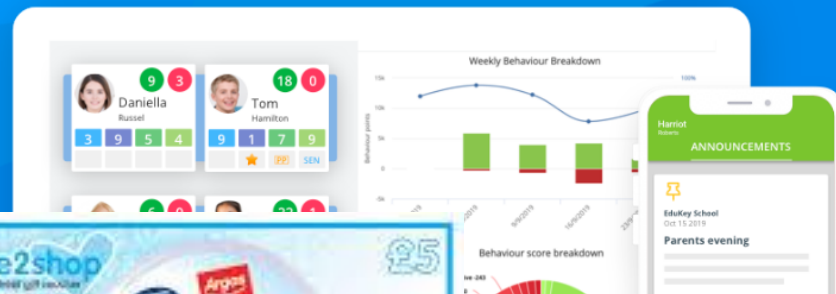
FEATURES

LOGIN

REQUEST YOUR DEMO

Plan ahead: Seating Plans and effective behaviour management will help keep pupils and staff safe

Save teachers time & reduce workload with our data rich seating plans. Improve pupil behaviour with our fast and effective behaviour m



- Excellence for All
- Character
- Outstanding Relationships
- Ambition
- Love of Learning
- Community
- Pride










CLASSCHARTS

Praise Points - Each lesson

Students will get rewarded by any adult in the Academy via ClassCharts for showing a positive attitude and a range of reasons.

◀ Believe & Achieve

						
Excellence	Outstanding Relationships	Love of Learning	Character	Ambition	Community	Pride



CLASSCHARTS

We will celebrate students success at every opportunity. Students will be rewarded for,


7 Core Values



Reading



Home Learning



Attended Study Club



Buddy



Open Evening Help



House Ethos Reward



1st place in House Competition



2nd place in House competition



3rd Place in House competition



Entered house competition

- Excellence for All
- Character
- Outstanding Relationships
- Ambition
- Love of Learning
- Community
- Pride

ASAP



ACADEMY RULES



- Arrive to all your lessons on time with the correct equipment (within 3 minutes of the bell)
- Follow all instructions given by adults
- Succeed through Active listening (ASAP)



Attention
to the speaker



Sit up
straight



Arms
on Table

Pens
down





SPARX MATHS & SPARX READER

- We use an online website called **Sparx** for Maths & English.
- Homework is set every week and follows exactly what students do in class.
- It is due every week, if students are stuck, we run a homework help club.

Why do we set homework?

- We are teaching students to be independent.
- We are backing up and practicing class work
- A student who completes all their work will be....
...40 hours ahead of students who don't!





Golden Ticket Draw!!

5 TICKETS TO BE DRAWN EACH TERM



CHECK OUT THE FANTASTIC PRIZES AVAILABLE AT THE BELIEVE & ACHIEVE REWARDS ASSEMBLY!

INCLUDING THE GOLDEN TICKET RAFFLE. REMEMBER TO KEEP YOUR TICKET SAFE AND SUBMIT IT TO THE HOUSE OFFICE OR BRING IT ON ASSEMBLY DAY.

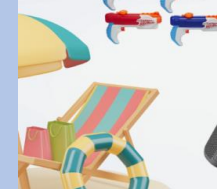
WIN!



- 2 x Paddleboards
- 10 x Nerf Super Soaker
- 4 x Selfie Ring Lights
- 4 x 10M LED Strip Lights
- 6 x Wireless Ear Buds



- 4 x Two Bare Feet 44" Body Boards
- 4 x Ortizan Bluetooth Speaker
- 2 x 2hr Paddleboard Activity Voucher
- 2 x 2hr Kayak Activity Voucher
- 8 x Voucher for a round of golf
- 9 x Splashdown Vouchers
- 2 x Cinema Vouchers



- Excellence for All
- Character
- Ambition
- Outstanding Relationships
- Community
- Love of Learning
- Pride



HIGH ATTENDANCE REWARDS



ATTENDANCE CERTIFICATES

100% ATTENDANCE THIS TERM - GOLD CERTIFICATE

97-99% - SILVER CERTIFICATE

95-96% - BRONZE CERTIFICATE



- Excellence for All
- Character
- Ambition
- Outstanding Relationships
- Community
- Love of Learning
- Pride



ABSENCE COMMUNICATION

Absence

Please notify the Academy before 8:20am

Please call our attendance officer

BRC - 01803 403721

WRC - 01803 403602

Or email via

attendance@paigntonacademy.org

- Excellence for All
- Character
- Outstanding Relationships
- Ambition
- Love of Learning
- Community
- Pride



UNIFORM – PROSERVE SUPPLIER ON WEBSITE





PAIGNTON ACADEMY

Home > Paignton Academy

SORT BY:

Relevance ▾

25 Products



PAIGNTON ACADEMY BOYS BLAZER



PAIGNTON ACADEMY GIRLS BLAZER



PAIGNTON ACADEMY TIE



PAIGNTON ACADEMY STRAIGHT

Academy Uniform Requirements for All Students

A high standard of personal appearance is expected of all students at Paignton Academy.

We request continued support of parents/guardians with regards to uniform. The expectation is that students wear the correct Paignton Academy full uniform at all times (in school, and to and from school) as it reflects on the individual as well as the School community.

Please find our uniform brochure below

Please click here for our Paignton Academy online shop



- Excellence for All
- Character
- Outstanding Relationships
- Ambition
- Love of Learning
- Community
- Pride



UNIFORM EXPECTATIONS

Ties must be clipped on and top button done up on shirt.

Shirts must be tucked in at all times.

No coloured t-shirts are to be worn under school shirts

Hoodies are not permitted

Academy jumpers can be worn but do not replace the blazers. Pupils must have a blazer

Pupils can wear a coat over the blazer but not instead of it.

All students require Black shoes & black socks

- Excellence for All
- Character
- Outstanding Relationships
- Ambition
- Love of Learning
- Community
- Pride



PE KIT

P.E. Kit - BOYS



Coolmax Sports Socks
Compulsory Item



Cuatro Shorts
Compulsory Item



Boys Vapour Polo
Compulsory Item



Pro-Tec Reversible Rugby Shirt
Compulsory Item



P.E. Kit - GIRLS



Coolmax Sports Socks
Compulsory Item



Cuatro Shorts
Compulsory Item



Girls Haze Polo
Compulsory Item



Football/Rugby Boots - we recommend round moulded football studs because metal studs and moulded blades are not allowed on the astro turf. Boots with round moulded studs can be used on the astro turf and the field.

- Excellence for All
- Character
- Outstanding Relationships
- Ambition
- Love of Learning
- Community
- Pride



SCHOOL UNIFORM LABEL EVERYTHING



Uniform Swap shop

Waterleat Road
Entrance on Top
Road

Tuesdays
3pm – 3:45pm

- Excellence for All
- Character
- Outstanding Relationships
- Ambition
- Love of Learning
- Community
- Pride

MOBILE PHONES



OFF & AWAY EVERYDAY

- Excellence for All
- Character
- Outstanding Relationships
- Ambition
- Community
- Love of Learning
- Pride



REQUIRED EQUIPMENT

- Adequate school bag for carrying books and equipment
- Black / blue pens x 3
- Purple pen x 2
- Pencil x 3
- Pencil sharpener
- Rubber
- Ruler
- Colouring pencils
- Protractor
- Glue Stick
- Scientific Calculator (we recommend a Casio FX83)

Many of these items can be purchased in time from ClassCharts with reward points!



AUDITION FOR THE SHOW



- Excellence for All
- Character

- Outstanding Relationships
- Ambition
- Community

- Love of Learning
- Pride



ENCOURAGE YOUR CHILD TO ATTEND ANY OF FREE OUR CLUBS



- Excellence for All
- Character
- Outstanding Relationships
- Ambition
- Love of Learning
- Community
- Pride



STUDENTS CAN ACCESS CLUBS ON BOTH SITES



- Excellence for All
- Character

- Outstanding Relationships
- Ambition
- Community

- Love of Learning
- Pride



ALL ABILITIES ARE WELCOME



- Excellence for All
- Character

- Outstanding Relationships
- Ambition
- Community

- Love of Learning
- Pride



APPLY TO BE A SPORTS LEADER





APPLY TO BE THE FORM CAPTAIN



- Excellence for All
- Character

- Outstanding Relationships
- Ambition

- Community

- Love of Learning
- Pride



BIKEABILITY LEVEL 2 & LEVEL 3



- Excellence for All
- Character
- Ambition
- Outstanding Relationships
- Community
- Love of Learning
- Pride



COMMUNICATION

Borough Road

Contact details – (01803) 403003
brdadmin@paigntonacademy.org

Waterleat Road

Contact details – (01803) 403005
wrdadmin@paigntonacademy.org

- Excellence for All
- Character
- Outstanding Relationships
- Ambition
- Love of Learning
- Community
- Pride



HOUSE TEAM CONTACTS

Waterleat Road Pastoral Team

Broadsands - wrcbroadsands@paigntonacademy.org

Elberry – wrcelberry@paigntonacademy.org

Goodrington – wrcgoodrington@paigntonacademy.org

Preston – wrcpreston@paigntonacademy.org

Borough Road Pastoral Team

Broadsands - brcbroadsands@paigntonacademy.org

Elberry – brcelberry@paigntonacademy.org

Goodrington – brcgoodrington@paigntonacademy.org

Preston – brcpreston@paigntonacademy.org



THANK YOU FOR LISTENING

ANY QUESTIONS?

- Excellence for All
- Character
- Ambition
- Outstanding Relationships
- Community
- Love of Learning
- Pride